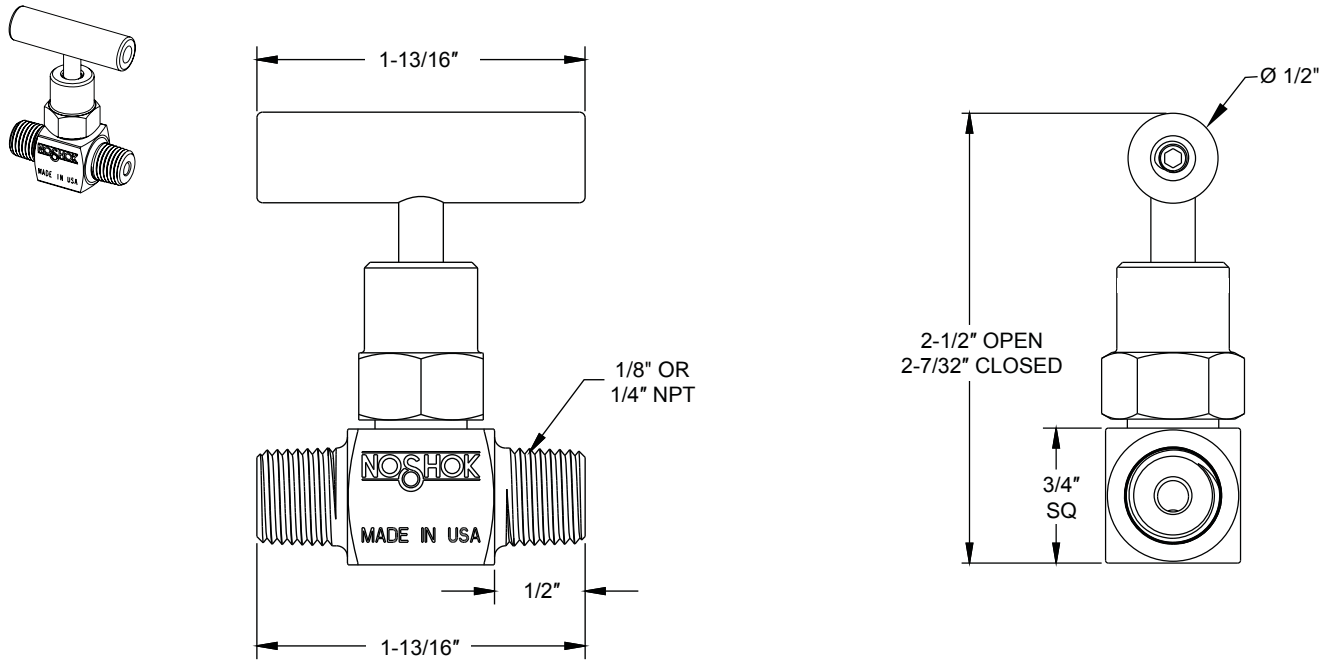
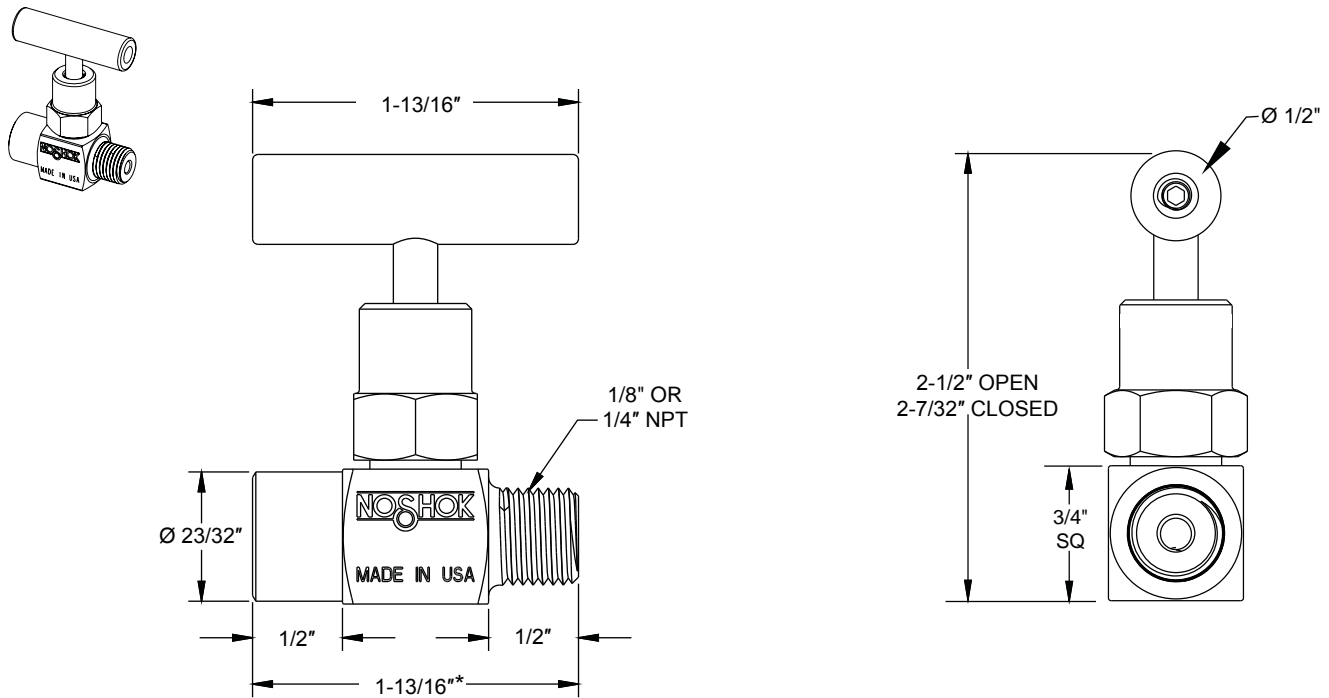


# Dimensions

## Male-Male

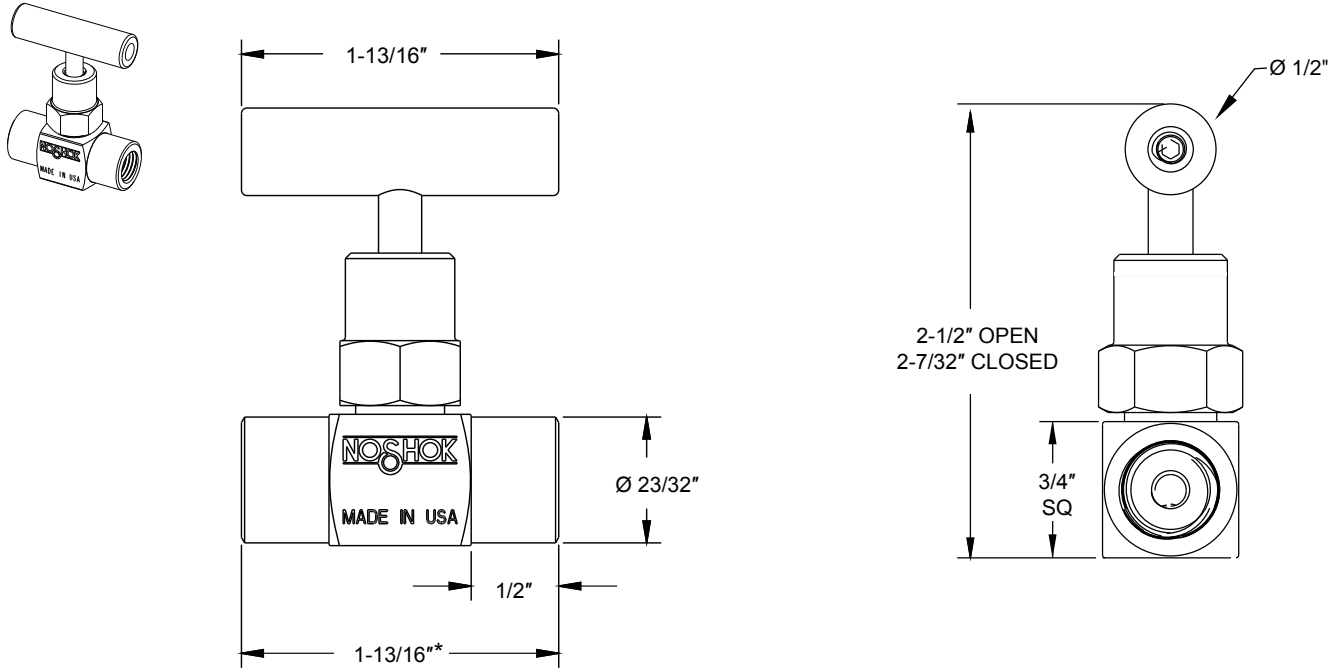


## Male-Female



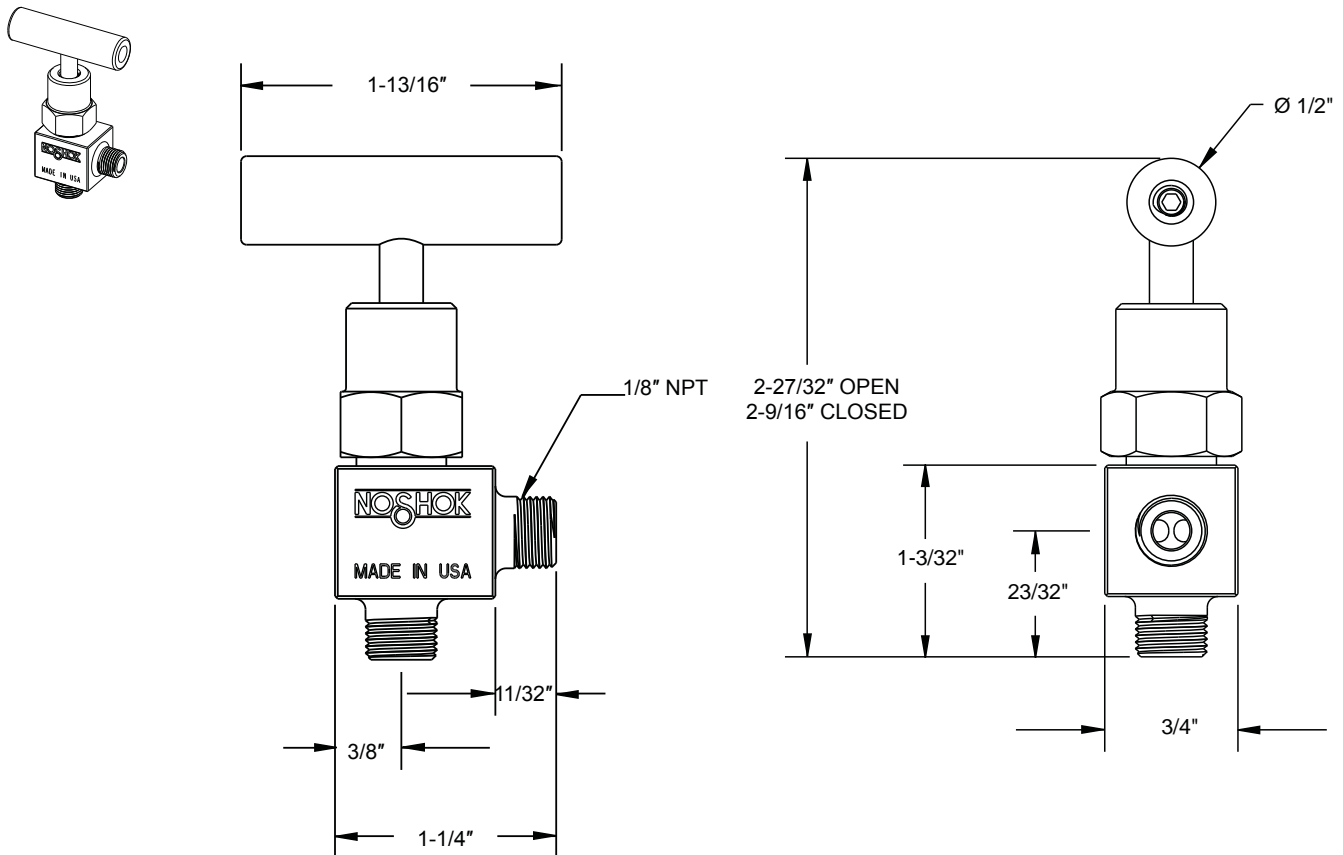
\*Dimension on extended version is 2-1/4"

Female-Female



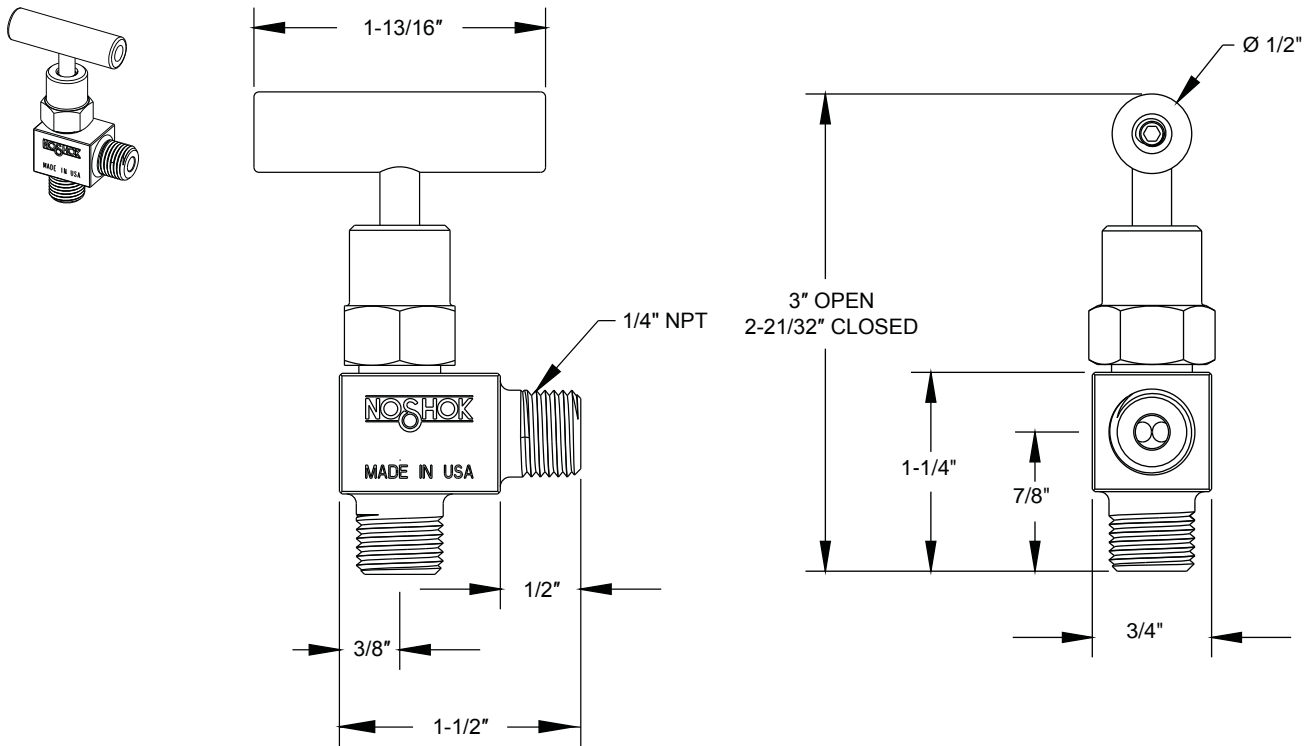
\*Dimension on extended version is 2-1/4"

1/8" Male-Male Angle

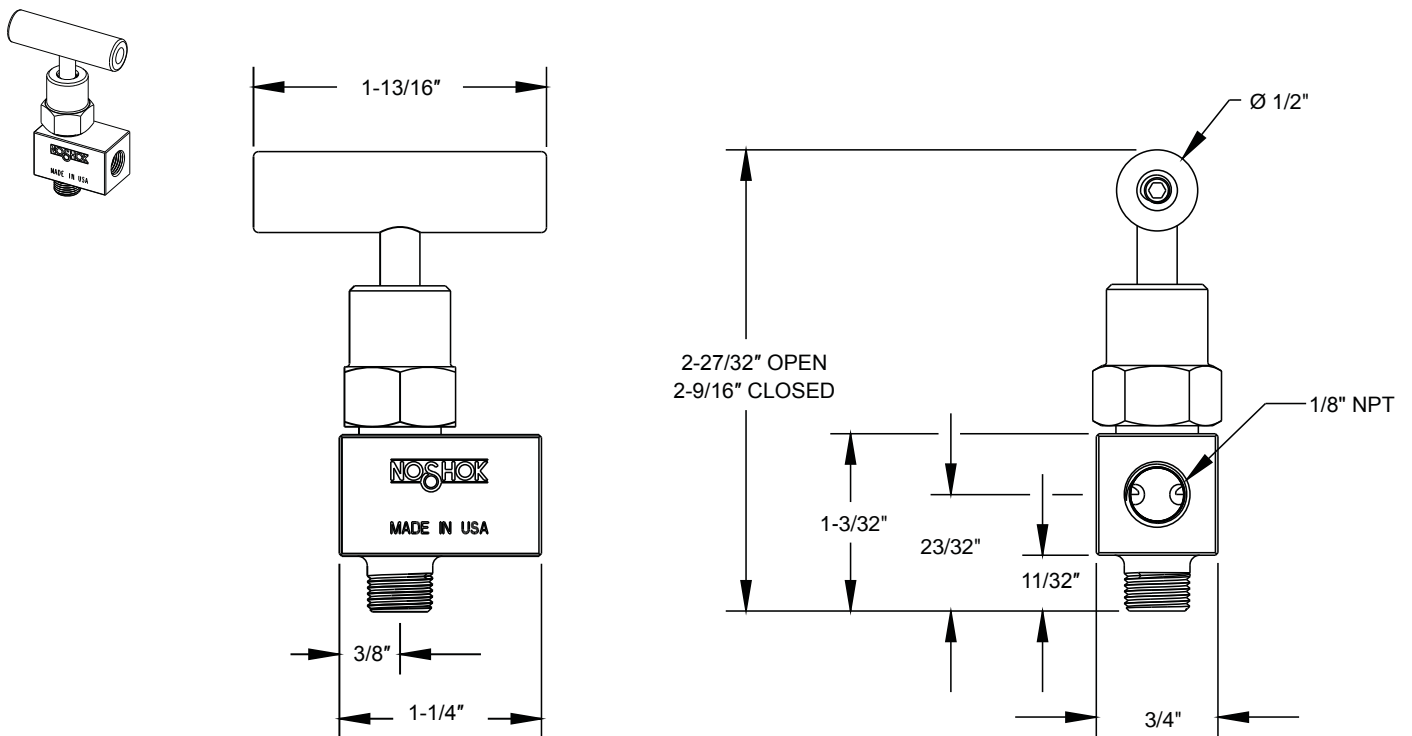


# Dimensions

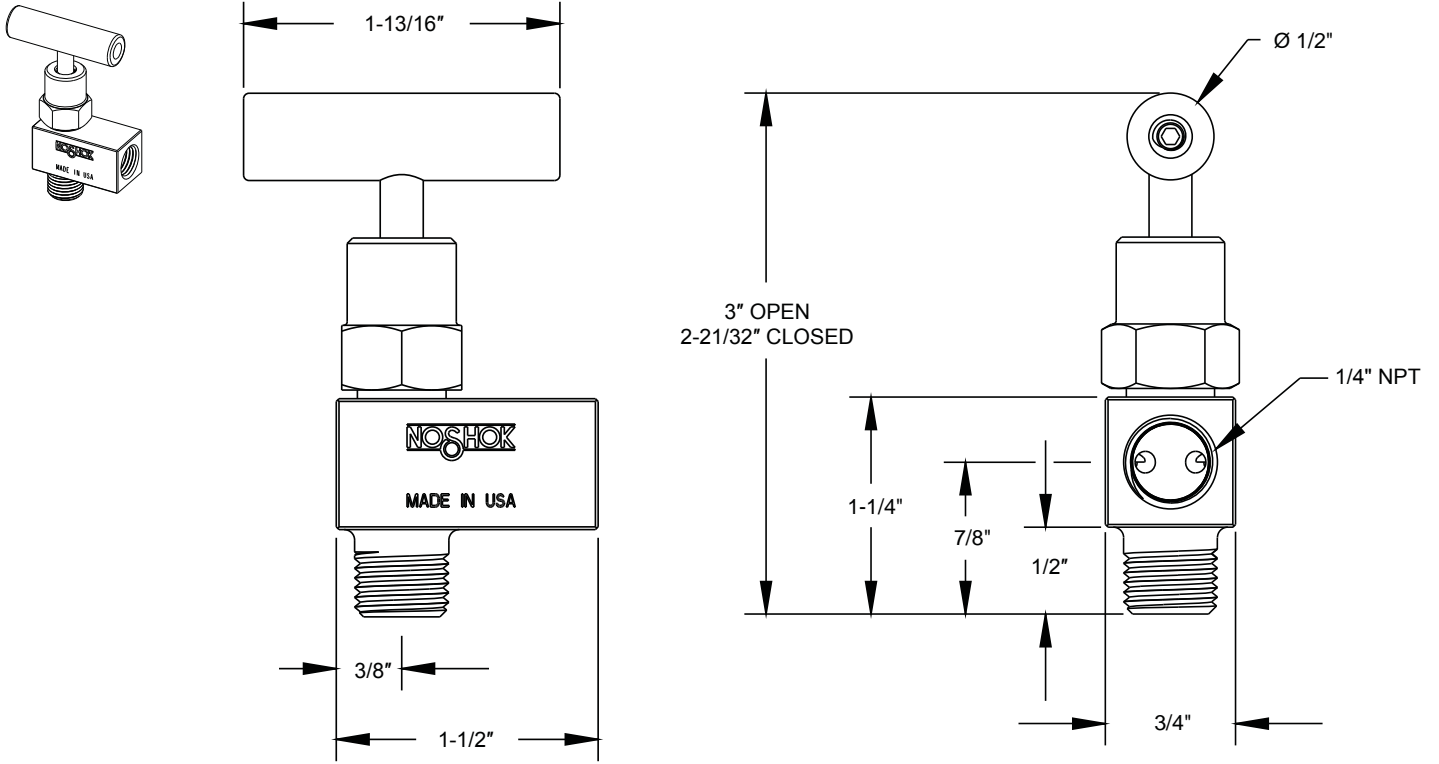
## 1/4" Male-Male Angle



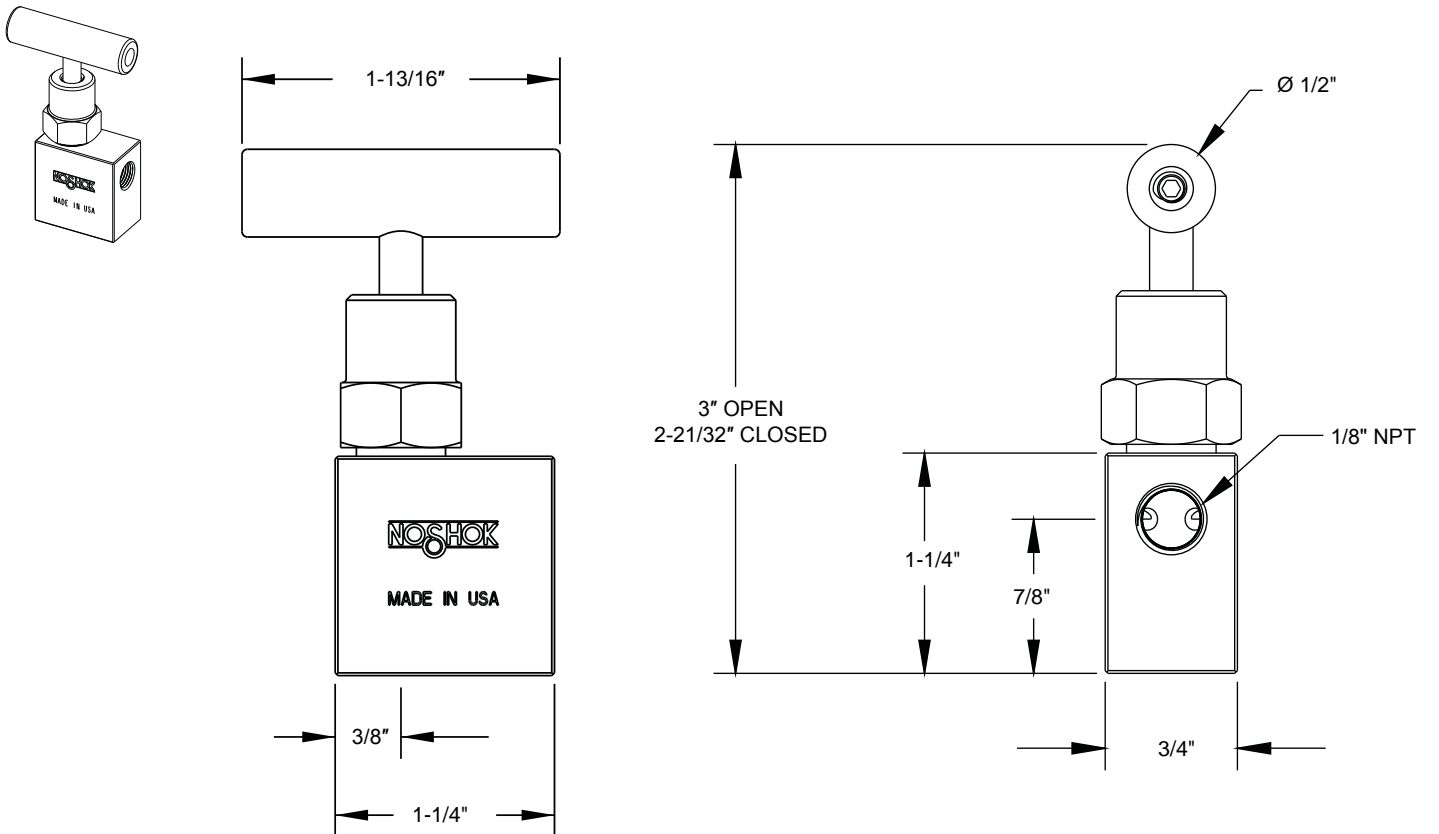
## 1/8" Male-Female Angle



1/4" Male-Female Angle

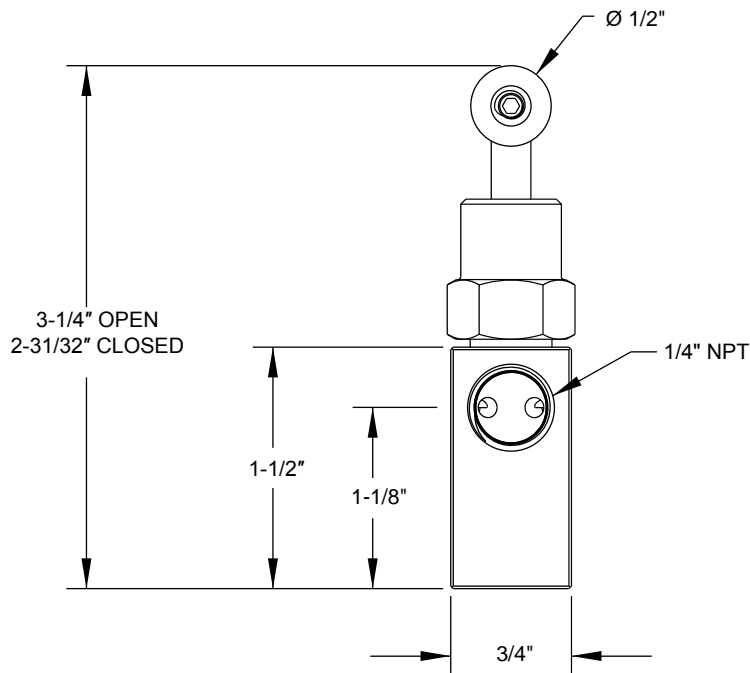
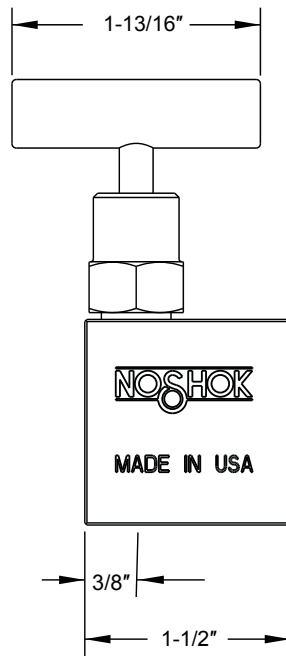
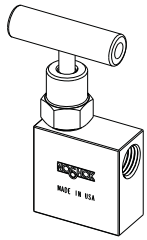


1/8" Female-Female Angle



# Dimensions

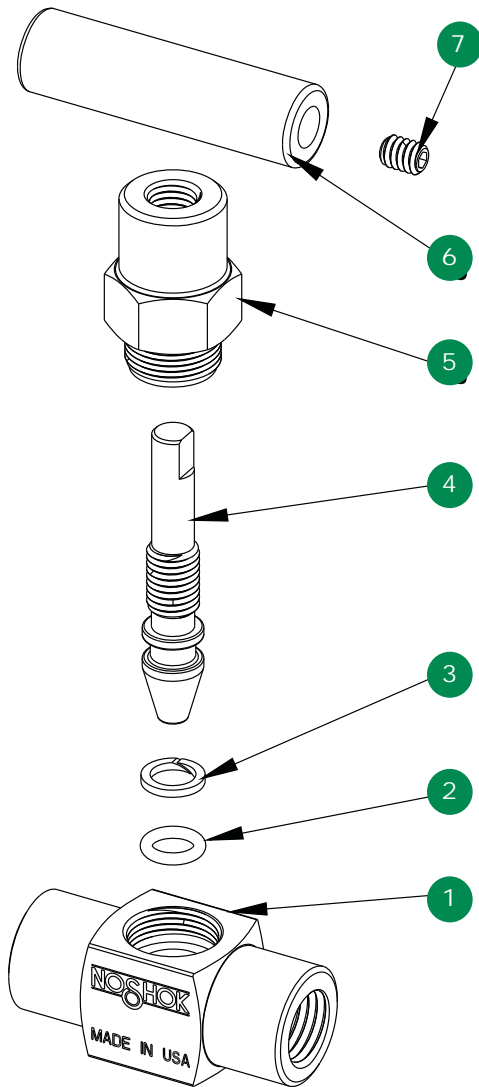
## 1/4" Female-Female Angle



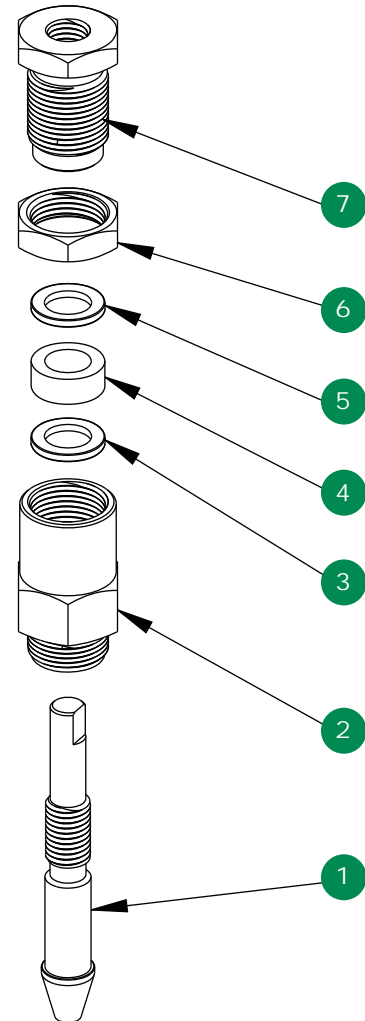
For panel mount, packing,  
& stem tip dimensions,  
see pgs. 64-67.

Mini, Hard Seat

Option With Packing



- 1 Mini valve body
- 2 FKM o-ring
- 3 PTFE back-up ring
- 4 Mini valve stem
- 5 Mini valve bonnet
- 6 Mini valve "T" handle
- 7 Set screw



- 1 Mini valve packing stem
- 2 Mini valve packing bonnet
- 3 Packing washer
- 4 Packing
- 5 Packing washer
- 6 Jam nut
- 7 Packing adjustment screw