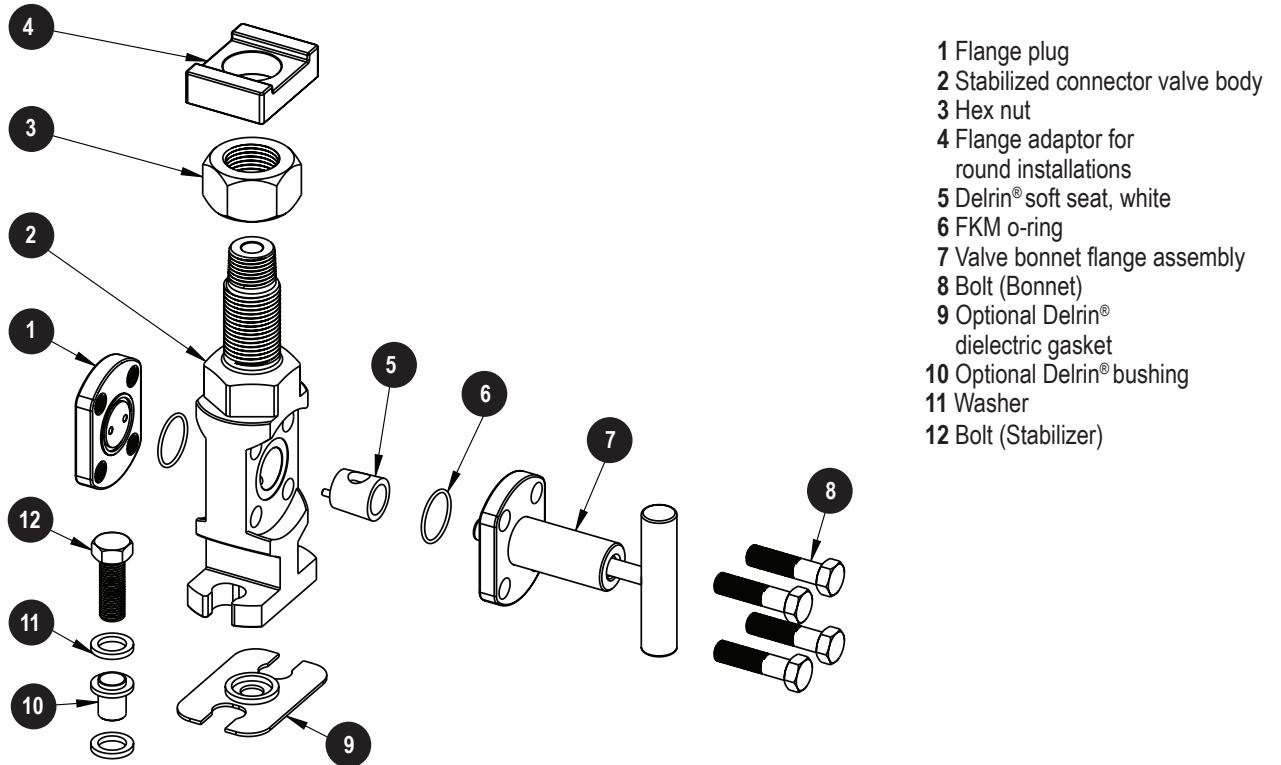




SV Series Stabilized Connectors with Integral Valve

Assembly Instructions



1. Apply sealant to tapered threads of SV Series Stabilized Connector with Integral Valve.
2. ***For round installations on an orifice flange, add the optional Flange Adaptor below the stabilizer nut. For flat installations such as an orifice fitting, proceed to step 3.***
3. Install first Stabilized Connector into orifice tap with a 1-1/2" size wrench.
4. Secure the stabilizer nut using a 1-1/2" wrench.
5. Determine which soft seat is required depending on the connector orientation. The soft seats can only be inserted on one side of the connector body. The white soft seat installs on the same side as the valve and the black soft seat installs on side opposite of the valve. Note: only one seat will be used.

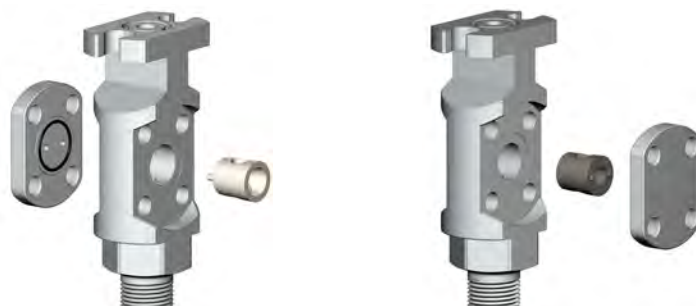


FIGURE 1

6. The soft seat will protrude from the hole when first installed. DO NOT force them into the hole. The soft seat will need to be rotated and will be press fit into place during the following steps. The protruding pegs of the soft seat should be oriented 90 degrees from the orifice of the connector body.

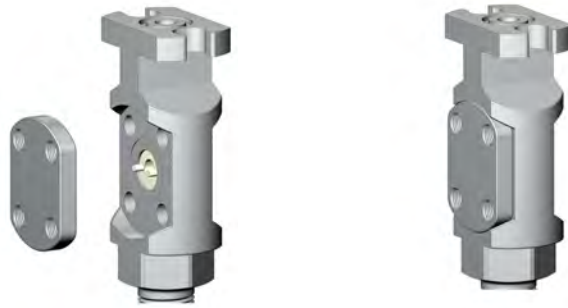


FIGURE 2

7. Install an O-ring on flange plug. (See Figure 1)
8. Using the holes in the flange plug, align the protruding pegs of the soft seat and rotate the flange and the soft seat so the bolt holes align with the body.
9. Install an o-ring on bonnet flange. (See Figure 3)
10. Align bolt holes on bonnet flange to connector body and flange plug.

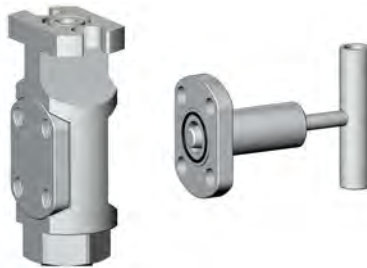


FIGURE 3

11. Insert bolts and hand tighten to draw all the components together. A gap is normal, seat will compress when bolts are fully tightened.
12. Gradually tighten four bolts in a criss-cross pattern, keeping the flanges level at all times. The soft seat will be drawn into the bore and the O-rings will be compressed until metal-to-metal contact is achieved between the connector body, bonnet and flange plug. Finalize by torquing each bolt to 35 ft-lbs.

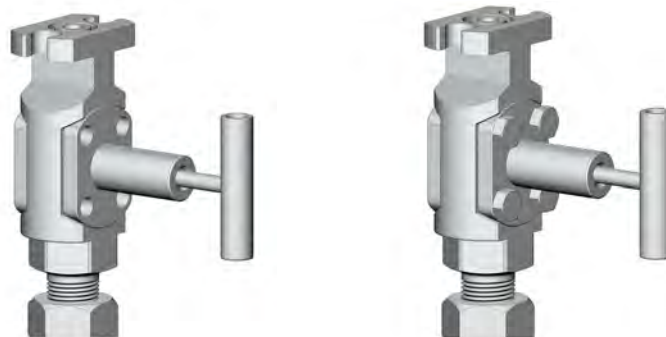


FIGURE 4

13. Repeat steps 1 & 2 with the second Stabilized Connector with Integral Valve.
14. Use straight edge to ensure each flange is adjusted to the same height.
15. Repeat steps 3 through 10 to complete installation.
16. Proceed to install other components of the hook-up according to manufacturer's instruction.



Scan QR Code to view animated assembly of SV Series Stabilized Connectors with Integral Valve.

NK15SVAI

NOSHOK

Corporate Headquarters

1010 West Bagley Road
 Berea, Ohio 44017
 Ph: 440.243.0888
 Fax: 440.243.3472
 E-mail: noshok@noshok.com
 Web: www.noshok.com

ISO 9001:2008
 REGISTERED